

# XTREME

MANUFACTURING

# XR3034

Capacity . . . . . 30,000 lbs  
 Max Lift Height . . . . . 34'  
 Forward Reach . . . . . 17' 6"  
 Frame Leveling L/R . . . . . 8°  
 Weight . . . . . 47,850 lbs  
 Engine . . . . . Perkins 130 hp  
 Fuel Capacity . . . . . 72 gal  
 Tires . . . . . Foam Filled  
                                     16.0 x 25 - 28 E3  
 GPM . . . . . 49  
 PSI . . . . . 4,500  
 Hydraulic Oil Cap . . . . . 58 gal  
 Length to fork face . . . . . 23' 4"  
 Width . . . . . 102"  
 Height . . . . . 9' 6"  
 Wheel Base . . . . . 148"  
 Ground Clearance . . . . . 15"  
 Turning Radius . . . . . 16' 8"  
 Warranty . . . . . Xtreme 10-5-2

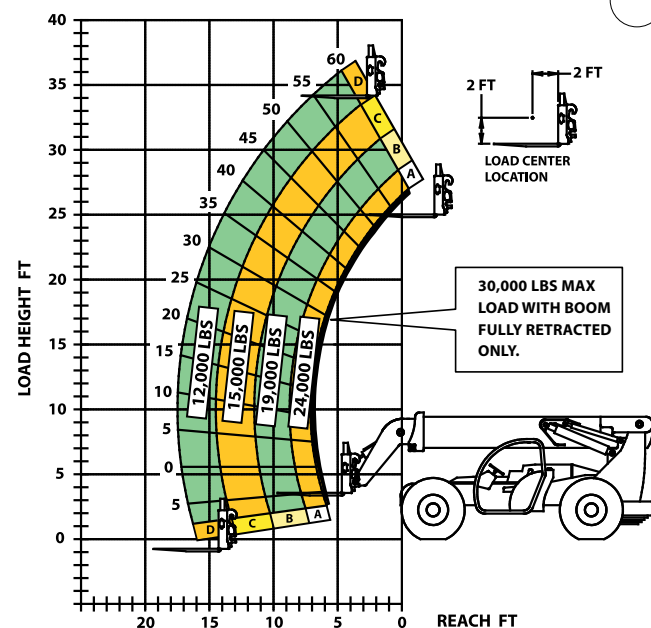


**30,000lbs Capacity**  
**34ft Lift Height**  
**130 hp**

XR3034 LOAD CHART - STANDARD 6FT CARRIAGE

LOAD RATINGS  
 SHOWN ARE FOR  
 VEHICLES EQUIPPED  
 WITH FOAM FILLED  
 TIRES ONLY.

15,000 LBS AT 24 IN  
 MIN CAPACITY FORK  
 (30,000 LBS PAIR).



**XTREME**  
 MANUFACTURING  
 702-636-2969 • 800-497-1704  
 P/N 17094-000

## STANDARD FEATURES

### The **XTREME** Difference



360° Visibility  
 Long Life Boom Rollers  
 Suspension Seat  
 Easy Service Access  
 Protected Tilt & Extend Cylinders  
 Steel Hydraulic & Fuel Tanks  
 Long Life Lexan Labels  
 Fiberglass Hoods  
 Heavy Duty Boom Chains  
 Suspended Pedals  
 Electrical Ring Terminals  
 Wider Outrigger Stance  
 Large Capacity Fuel Tanks  
 Trunnion Mounted Sway Cylinders  
 Melonite Pins  
 Rear Axle Stabilization (RAS)  
 Center Mounted Power Train  
 Standard Auxiliary Hydraulics  
 Solid Steel Plate Chassis  
 Steel Dash  
 Ductile Steel Manifold  
 Easy Cab Mounted Grab Handles  
 Reliable Perkins Engine  
 Master Disconnect Switch  
 Boom Lift Point  
 Axle Mounted Outriggers  
 Manual Lowering Valve (Cylinders)  
 Large Cross Section Boom  
 Easy Tie Downs  
 "Y" Frame Sway Handle  
 Heavy Duty Pre-Cleaner  
 Additional High Pressure Hyd Filter  
 Direct Engine/Trans Connection  
 Individual Gauges and Switches

## ATTACHMENTS & ACCESSORIES

### Attachments



Standard Fixed Carriage  
 (48", 60", 72", 96")  
 Fork Positioning Carriage  
 (48", 72", 96")  
 Swing Carriage  
 Tilt Carriage  
 Personnel Platform  
 Sling Mount  
 Bucket (1.0 - 2.0 cu-yd)  
 Truss (2 ft, 3 ft, 12 ft, 15 ft)  
 Telescopic Truss (Slide on)  
 Pole Grapple Carriage  
 Grapple Bucket  
 Concrete Hopper

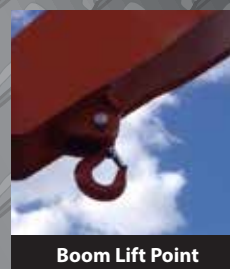
### Accessories / Options



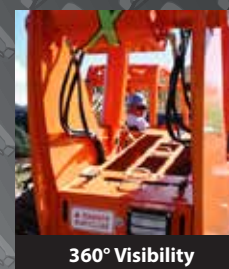
Enclosed Cab w/Heat  
 Enclosed Cab w/Heat & A/C  
 Boom Work Light Package  
 Flashing Amber Strobe  
 Pintle Hook  
 Tail/Turn/Brake Lights  
 LED Lighting  
 Steel Fenders  
 5th Wheel Attachment  
 Boom Maintenance Stand  
 Battery Blanket  
 Limited Slip Axle(s)  
 Locking Fuel Cap  
 Soft Cab  
 Additional Lift Points  
 Swivel Lifting Hook  
 Auxiliary Cab Heater  
 Dual Batteries  
 Clear Glass  
 Padded Arm Rest  
 Two Wheel Rear Steer



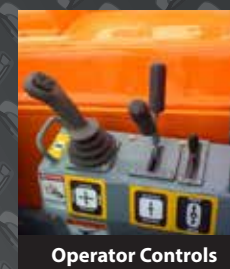
Long-Life Rollers



Boom Lift Point



360° Visibility



Operator Controls

### 10-5-2 WARRANTY

**10 YEARS OR 10,000 HOURS**  
 FRAME & CHASSIS WELDMENT

**5 YEARS OR 5,000 HOURS**  
 BOOM WELDMENT & ROLLERS

**2 YEARS OR 2,000 HOURS**  
 ENGINE, ELECTRICAL, TRANSMISSION, DRIVE  
 AXLES & HYDRAULIC COMPONENTS

**www.XMFG.com**

**(702) 636-2969 (800) 497-1704**  
**1415 W. BONANZA RD LAS VEGAS, NV 89106**